



# Gordon's School Drama Department

## GCSE - Curriculum Map



### Key Words / Skills:

Physical Skills, Body Language, Facial Expression, Gesture, Space, Levels, Eye Contact, Gait, Stillness, Vocal Skills, Volume, Pitch, Emphasis, Pace, Silence, Inflection, Tone, Accent, Pause Set, Trap Door, Tabs, Flats, Cyclorama, Floor Cloth, Flyspace, Furniture, Props, Sound, Angle of Sound, Music, Fade, Lighting, Intensity, Fresnel, Spotlight, LED, Up-lit, Back-lit, Side-lit, Front-lit, Snap, Temperature, Chase, Gobo, Strobe, Soft Edge Spotlight, Hard Edge Spotlight, Proscenium Arch, Stage Left, Stage Right, Upstage, Downstage, Centre Stage, Traverse, In the Round, Exit A-Exit DThrust, Interpretation, Intentions, Costume, Material, Texture, Size, Colour, Makeup, Mascara, Contour, Foundation, Eyeliner, Eye shadow, Lipstick, Prosthetics, Lip Liner, Eyebrows, Blusher, Hair, Style, Products, Wigs, Condition, Accessories



Component 3 GCSE - The study of a playtext – Find Me - Written Analysis

Component 3 GCSE - Live Theatre - Written Analysis and Evaluation



Component 3 GCSE - The study of a playtext – Find Me - Written Analysis

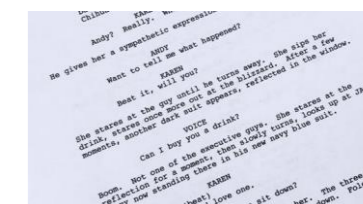
Component 3 GCSE - Live Theatre - Written Analysis and Evaluation



Component 2 GCSE - Scripted Performance

Component 3 GCSE - Studying of a playtext - Find Me - Written Analysis

Component 3 GCSE - Live Theatre - Written Analysis and Evaluation



Component 1 GCSE - Devised - Practical Performance and Written Coursework and Evaluation



Component 3 GCSE - Studying of a playtext - Find Me - Written Analysis

Year 11

Component 1 GCSE - Devised Performance, Written Coursework

Component 3 GCSE - The study of a playtext - Find Me - Written Analysis

Component 3 GCSE - Live Theatre - Written Analysis and Evaluation



Component 1 GCSE - Devised Performance, Written Coursework

Physical Theatre - Practical Exploration



Component 1 MOCK - Devised - Practical Performance, Written Coursework and Evaluation

Component 3 GCSE - The study of a playtext - Find Me - Written Analysis

Live Theatre - Written Analysis and Evaluation

Physical Theatre

Component 3 – Find Me



Year 10



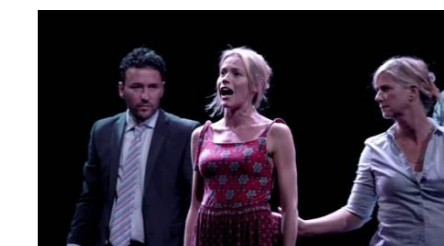
Naturalism - Scripted Performance

Component 3 GCSE - Live Theatre - Written Analysis and Evaluation



Bertolt Brecht - Devised Performance

Component 3 GCSE - Live Theatre - Written Analysis and Evaluation



### Exam Specification:



Should this QR code not work, please click [here](#) for the relevant specification.